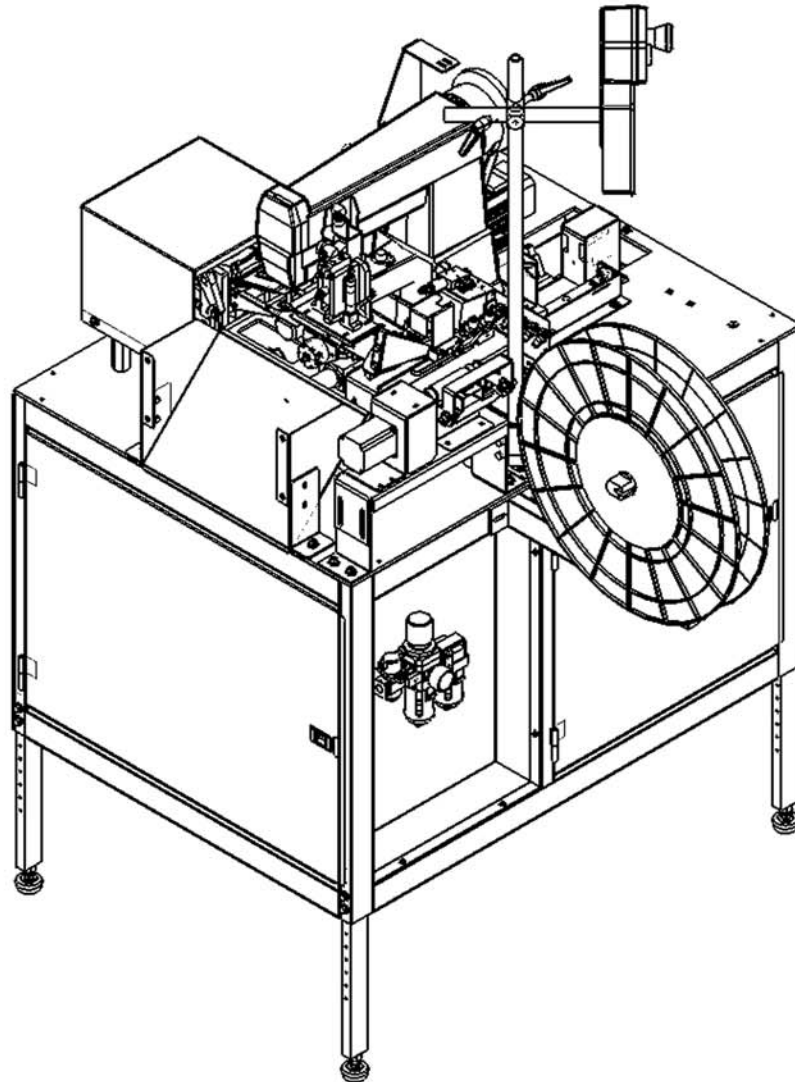


model: **1959-K3**
Auto Handle Tacker



Technical Manual & Parts List

"Sudden Service"®



From the library of: Diamond Needle Corp

Atlanta Attachment Company

362 Industrial Park Dr.
Lawrenceville, GA 30045
Phone: 770-963-7369
www.atlatt.com



One-Stop Shopping
for Expendable Replacement
Parts for AAC & Other Bedding
Equipment Suppliers
Toll Free: **1-866-885-5100**

www.atlantapartsdepot.com

Revision 0
Created: November 8, 2007

Atlanta Attachment Company, Inc.

Confidential And Proprietary Information

The materials contained herein are confidential and proprietary information of Atlanta Attachment Company. In addition to any confidentiality and non-disclosure obligations that currently exist between you and Atlanta Attachment Company, your use of these materials serves as an acknowledgment of the confidential and proprietary nature of these materials and your duty not to make any unauthorized use or disclosure of these materials.

All materials contained herein are additionally protected by United States Copyright law and may not be used, disclosed, reproduced, distributed, published or sold without the express written consent of Atlanta Attachment Company, which consent may be withheld in Atlanta Attachment Company's sole discretion. You may not alter or remove any copyright, trademark or other notice from copies of these materials.

Patents & Patents Pending

The sale of this product does not sell or otherwise transfer any license or other rights under any U.S. Patent or other corresponding foreign patent.

This equipment is protected by one or more of the following patents:

US patents: 4,038,933; 4,280,421; 4,432,294; 4,466,367; 4,644,883; 4,886,005; 5,134,947; 5,159,889; 5,203,270; 5,307,750; 5,373,798; 5,437,238; 5,522,332; 5,524,563; 5,562,060; 5,634,418; 5,647,293; 5,657,711; 5,743,202; 5,865,135; 5,899,159; 5,915,319; 5,918,560; 5,924,376; 5,979,345; 6,035,794

Foreign patents - 2,084,055; 2,076,379; 2,177,389; 2,210,569; 4-504,742; 8-511,916; 9-520,472; 0,537,323; 92,905,522.6; 95,935,082.8; 96,936,922.2; 5,159,889; 5,203,270.

Other U.S. and Foreign Patents Pending.



IMPORTANT

It is important to read and understand the information contained within this manual before attempting to operate the machine. Atlanta Attachment Co., Inc. shall not be held liable for damage resulting from misuse of the information presented within, and reserves the right to change the information contained within, without prior notification.

Atlanta Attachment Company
362 Industrial Park Drive
Lawrenceville, Georgia 30045
Phone: (770) 963-7369
Fax: (770) 963-7641
Email: sales@atlatt.com

Table Of Contents

Safety Precautions	1
Touch Screen Operation	2
Calibrating The Touch Screen	2
Map of Common Screens	3
Adjustments	4
Aligning The Rotation Bridge	4
Loading The Handle Material	5
Aligning the Handle Material	6
Adjustments When Material Thickness Changes	7
Handle Dimensions	8
Folding Steps	9
Electric Eye Sensor	10
Reflective Tape Maintenance	10
Assembly Drawings & Parts Lists	11
1959-K3 Main Assembly	13
1959-400 Feed Assembly	15
1959201 Folder Assembly	17
1959225 Index Assembly	19
1959237 Sew Head Assembly	20
1959244 Carriage Drive Assembly	21
1959280 Stand Assembly	22
1959285 Knife Assembly	23
AT401-07HD Cutter Sub-Assembly	25
97-1700 Touch Screen Assembly	26
1959K3-PD Pneumatic Diagram	27
1959K3-WD Wiring Diagram	28
1959K3-WD1 Wiring Diagram	29
Notes	30

Safety Precautions

It is important that the machine operator read this manual and is familiar with all the functions and safety concerns of the unit before operating.



General

The safety guidelines mentioned in this manual cover the entire product line of Atlanta Attachment Company. Some warnings and/or instructions may not apply to this particular unit.

All maintenance should be performed by a qualified service technician.



Electrical

- Electrical connection requires 220vAC, 5 Amp, 50/60 Hz Single Phase
- Disconnect the power source before threading or replacing the needles.
- Disconnect the power source before leaving the machine unattended.
- Disconnect the power source before removing or replacing parts or making adjustments and/or performing maintenance.
- Disconnect the power source before opening electrical control panels.



Pneumatics

Air supply requires 80 PSI, 2 SCFM avg.

Air Cylinders

- Keep hands away from pneumatic cylinders at all times.
- Disconnect air supply before servicing air cylinders.



Knives

- This machine may utilize knives and/or thread cutters that may activate automatically.
- Keep hands away from knife blades at all times.
- Disconnect power source and air supply before replacing damaged blades.



Conveyors

- This unit may include material conveyors.
- Keep hands away from belts.
- Keep hands away from motors and pulleys used to power the conveyors.



Pullers

- This unit may include pullers used to pull material into a sewing head, knife, etc.
- Keep hands away from pullers.

Sewing Heads

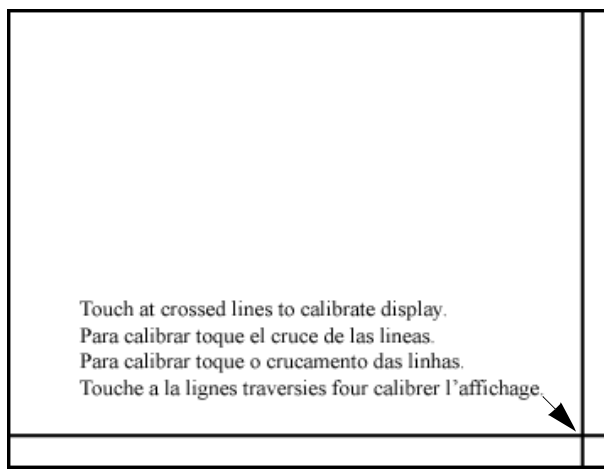
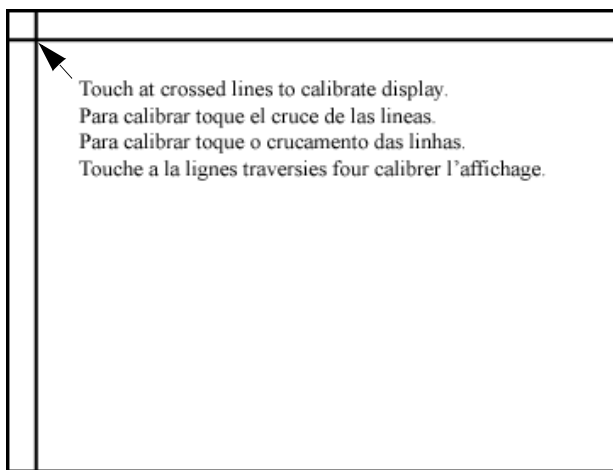
- Keep hands and all other objects away from needles.
- Disconnect power source and air supply before making adjustments to the sewing head, replacing needles, threads, bobbins, etc.

Touch Screen Operation

The graphics images presented on the touch screen show "3-dimensional" buttons, which may be pressed to access other screens, change counters and timers, or actuate hardware. Areas lacking the "3- dimensional" border contain information only. Counters are identified with the "+" and "-" buttons in the corners. These counters may be adjusted by pressing the "+" and "-" boxes. Pressing the dark area of the counter button will access another screen that gives detailed information about the counter and how to adjust it. Pressing RESET from any screen clears all machine functions and returns to the READY page. Normal operation of the machine is controlled from the READY page. The READY page allows anyone to access the necessary functions and adjustments needed for normal operation of the machine. There are also advanced functions that are only accessible by an authorized mechanic and include: timers and counters that control machine hardware, input and output test screens, and machine statistics. To get to the advanced functions the appropriate password must be entered at the security screen. Security access is reset whenever the main power is turned off, or the RESET button on the READY page is pressed.

Calibrating The Touch Screen

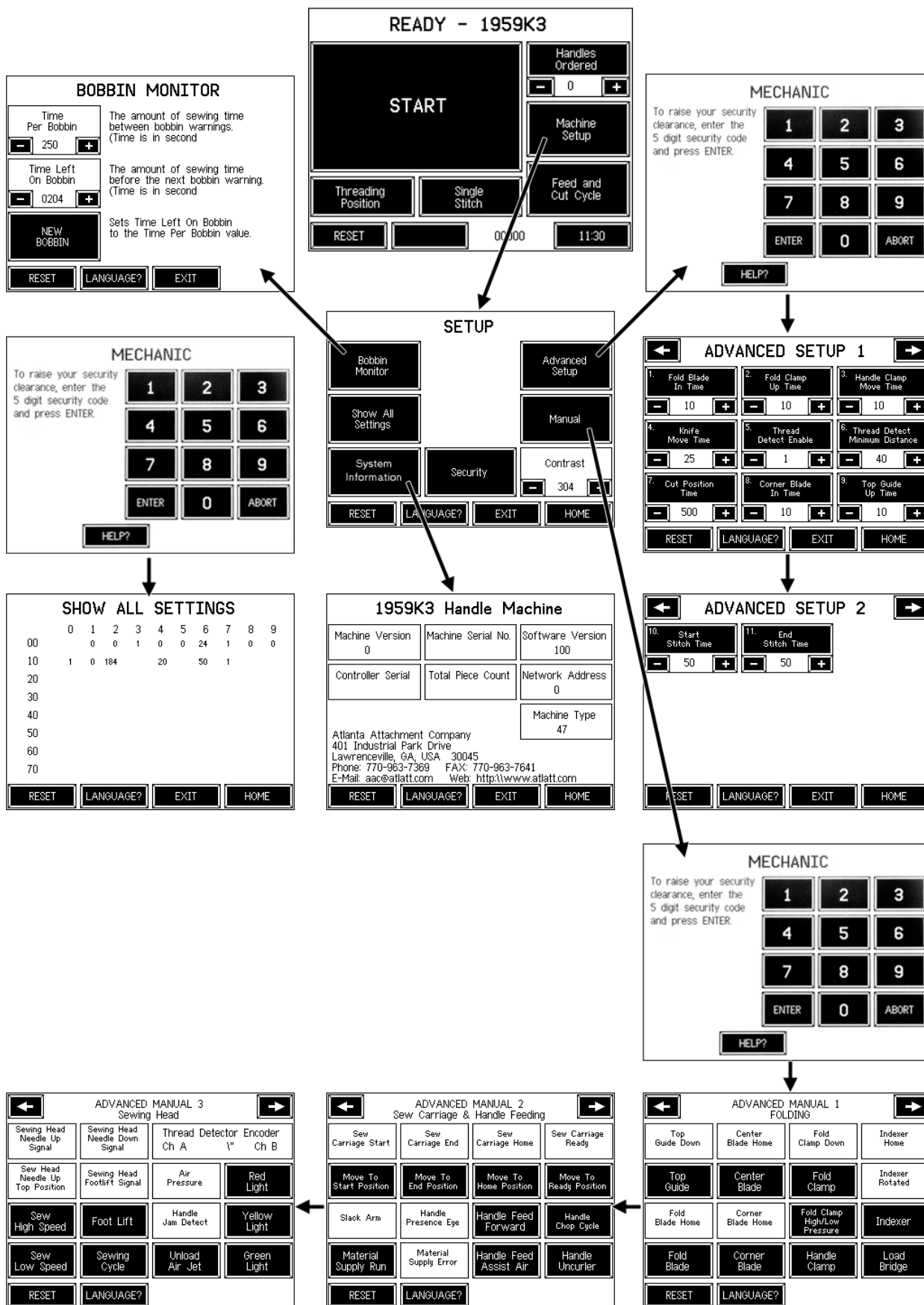
Press the red stop button located above the touch screen.
Place one finger on the screen and hold it there while pushing the green on button located above the touch screen. Keep one finger on the screen until the display looks like the image shown below.
Touch the screen the the crossed lines in the upper left corner of the screen.
The display will then tell you to touch the screen at the crossed lines in the lower right corner.
The screen is now calibrated.
Press the Reset button on the next screen.



From the library of: Diamond Needle Corp



Map of Common Screens



From the library of: Diamond Needle Corp



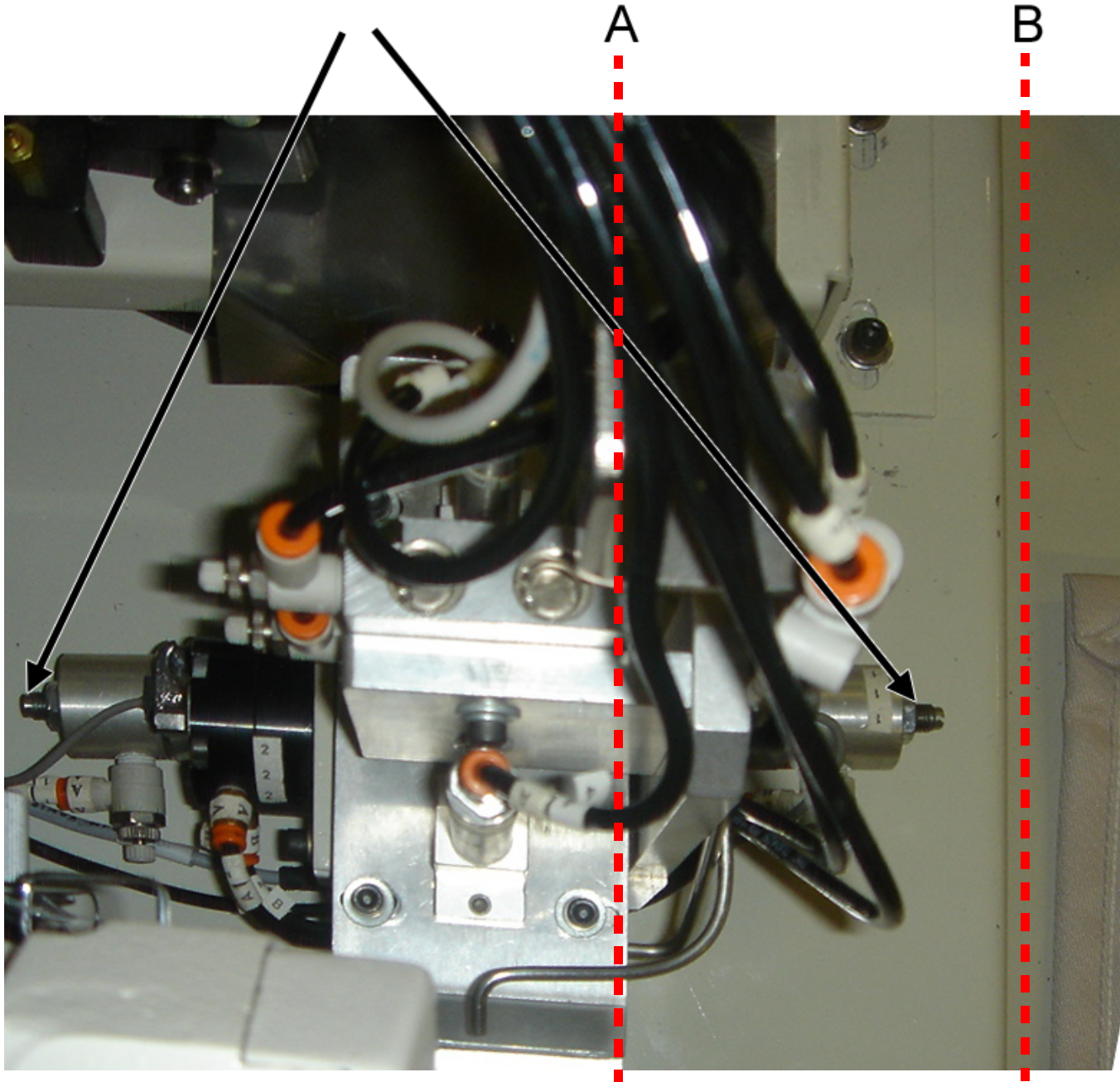
Adjustments

Aligning The Rotation Bridge

Important:

Rotation Bridge must be parallel with front edge of the machine stand on both positions (A parallel to B).

Adjustment: Release 2 cylinder nuts C & D and adjust screws until the Rotation Bridge is parallel with the machine stand.



From the library of: Diamond Needle Corp

Loading The Handle Material

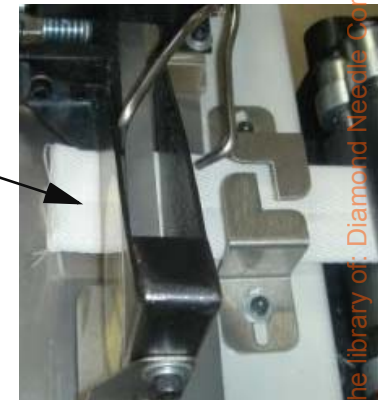
Step 1:
Feed the handle material thru the sensor rod.



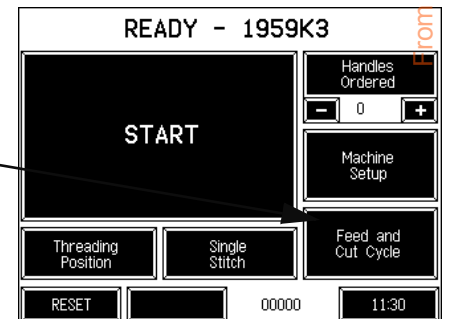
Step 2:
Lift the upper puller roller and feed material through.



Step 3:
Feed the material between the lower and upper knife blades.



Step 4:
Press the "Feed and Cut Cycle" button.



Step 5:
Remove the scrap material.



Aligning the Handle Material

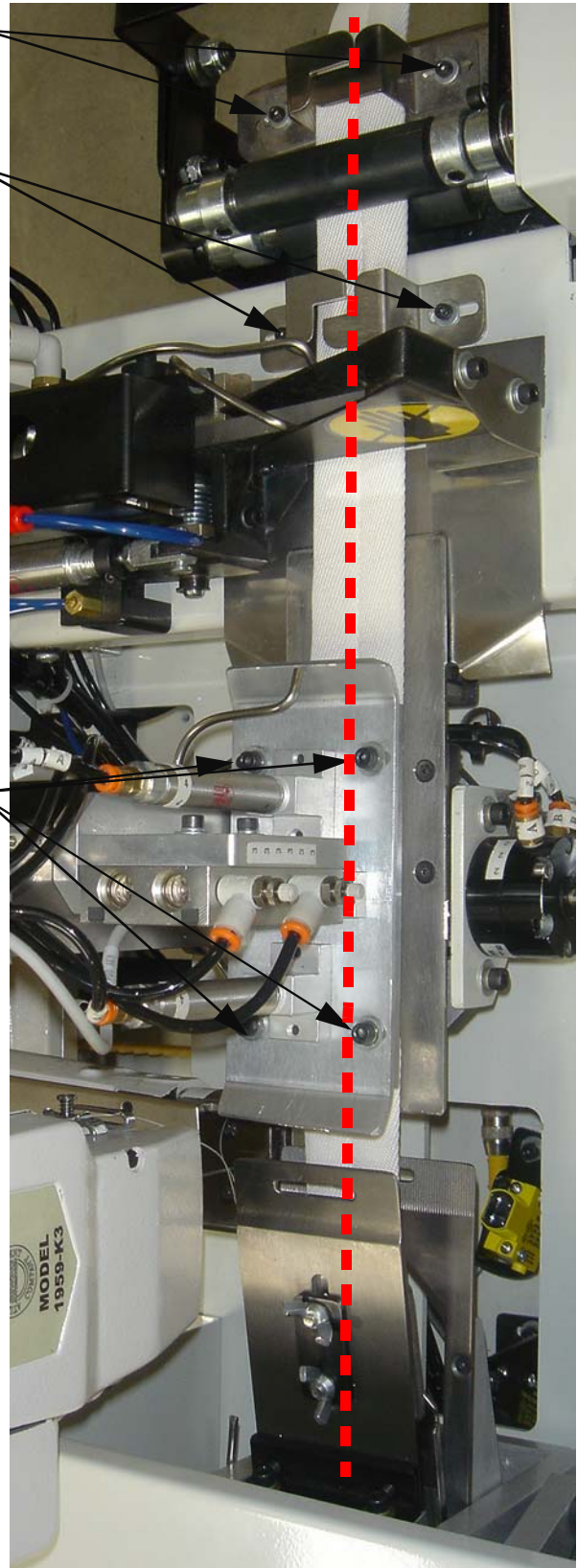
The handle material must be centered with the folding station.

1. Adjust the 2 guides according to handle width.

2. Adjust the 2 guides according to handle width.

3. Adjust the 2 center guides according to handle width.

4. Verify that the handle material is aligned with all components. Also be sure the guides are close enough to the material to keep it from moving side to side but loose enough for the material to be fed freely.

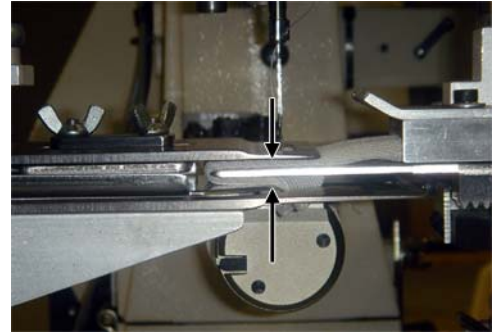


From the library of: Diamond Needle Corp

Adjustments When Material Thickness Changes

When changing to a thicker or thinner material than what was previously sewn, the following adjustments must be made.

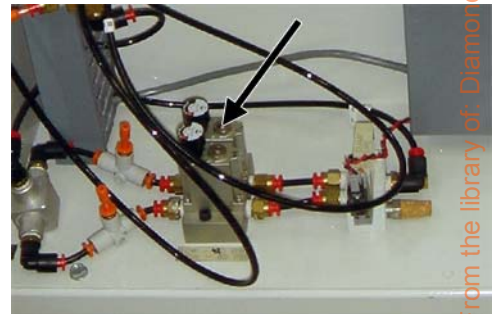
1. Adjust the distance between the transfer bridge and the lower folding plate so that there is enough gap to allow the material to fold.



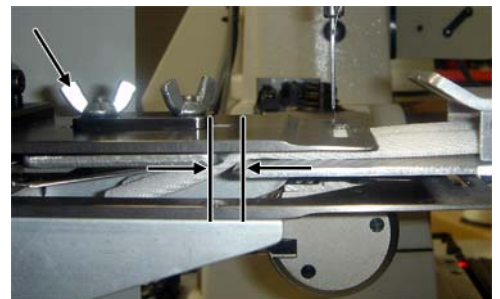
Adjustment: Loosen the two screws that hold the bridge rotation tower. Move the tower up or down as needed to create the gap needed to allow the material to fold. Tighten the two screws.



2. Adjust the air pressure as needed. Too much pressure will prevent the lower plate from returning to its home position.

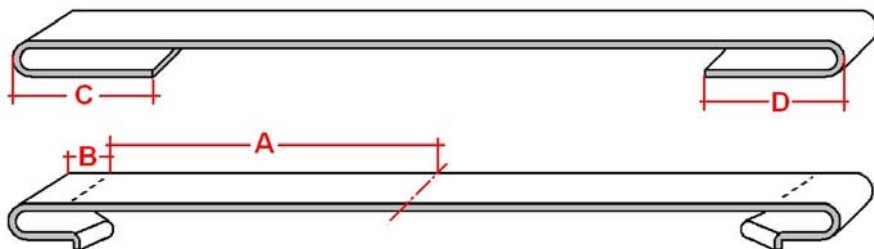


3. Loosen the two wing nuts and adjust the distance between the handle stop plate and the edge of the transfer bridge so that the material fits. Tighten the two wing nuts.



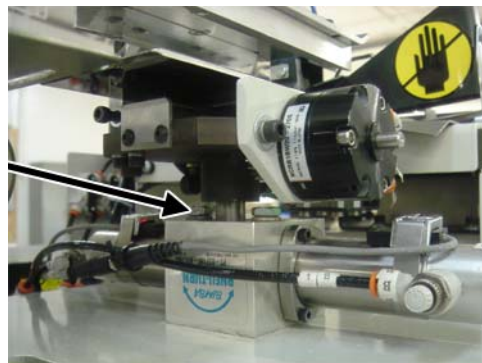
From the library of: Diamond Needle Corp

Handle Dimensions



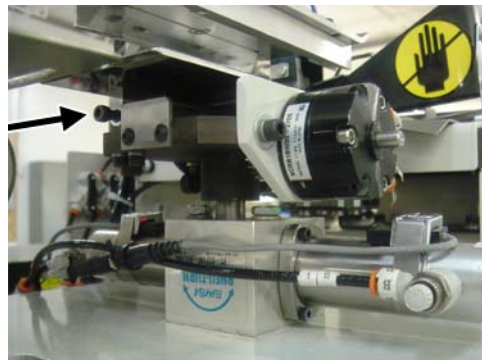
A - The distance from the center of the handle to the sewn seam.

To adjust this distance, loosen the two screws on the rotation bridge and move as required. It is important to keep the rotation bridge parallel to the edge of the machine.



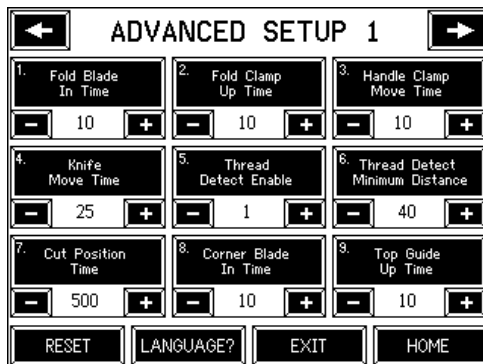
B - The distance from the sewn seam and the edge of the handle.

Use the two side limit screws on the transfer bridge to adjust this distance.



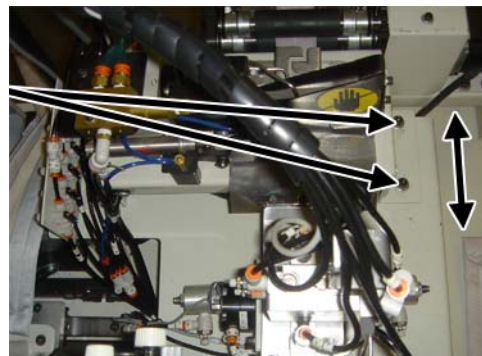
C - The distance between leading edge of the handle to the edge of the first folded tab.

Increase or decrease the number shown in the "Cut Position Time" in the Advanced Setup 1 screen.



D - The distance between the trailing edge of the handle to the edge of the second folded tab.

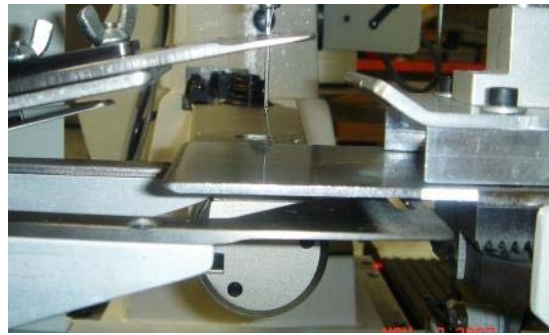
Adjust this distance by loosening the 4 screws that mount the cutting station and moving forward or backwards as needed.



Folding Steps



1. Home Position



2. Bridge moves to the right.



3. Handle is loaded



4. Clamp Close



5. Inside plate moves forward for first fold.



6. Lower plate moves backwards for second fold.

From the library of: Diamond Needle Corp



Electric Eye Sensor

Mount the sensor so that it is 2-6" from the material to be detected. The sensor does not have to be perpendicular to the material. An angle of up to 30 degrees can be used.

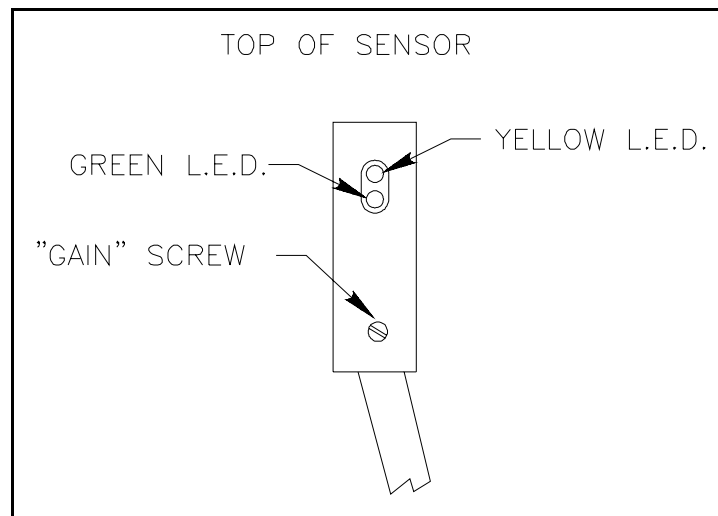
Operation:

The green LED indicates power on. If the green LED is flashing, it indicates an overload condition on the output and the sensor may be damaged. The yellow LED indicates the sensor is "seeing" material. If the yellow LED is flashing, it indicates the sensor output is marginal and the sensor needs to be adjusted.

Adjustment:

Adjust the "Gain" screw so that the yellow LED is on steady when the material is present and completely off when the material is absent.

When used as a "Roll Full Detector" on a rewriter, adjust the "Gain" so the yellow LED comes on only when the roll is full.



Reflective Tape Maintenance

Use a soft cloth for cleaning.

Do not use chemicals or abrasives to clean it.

Avoid any contact with oils and liquids.

Do not touch the tape with bare fingers.

If tape is dirty or opaque, the eye may not function correctly.

Assembly Drawings & Parts Lists

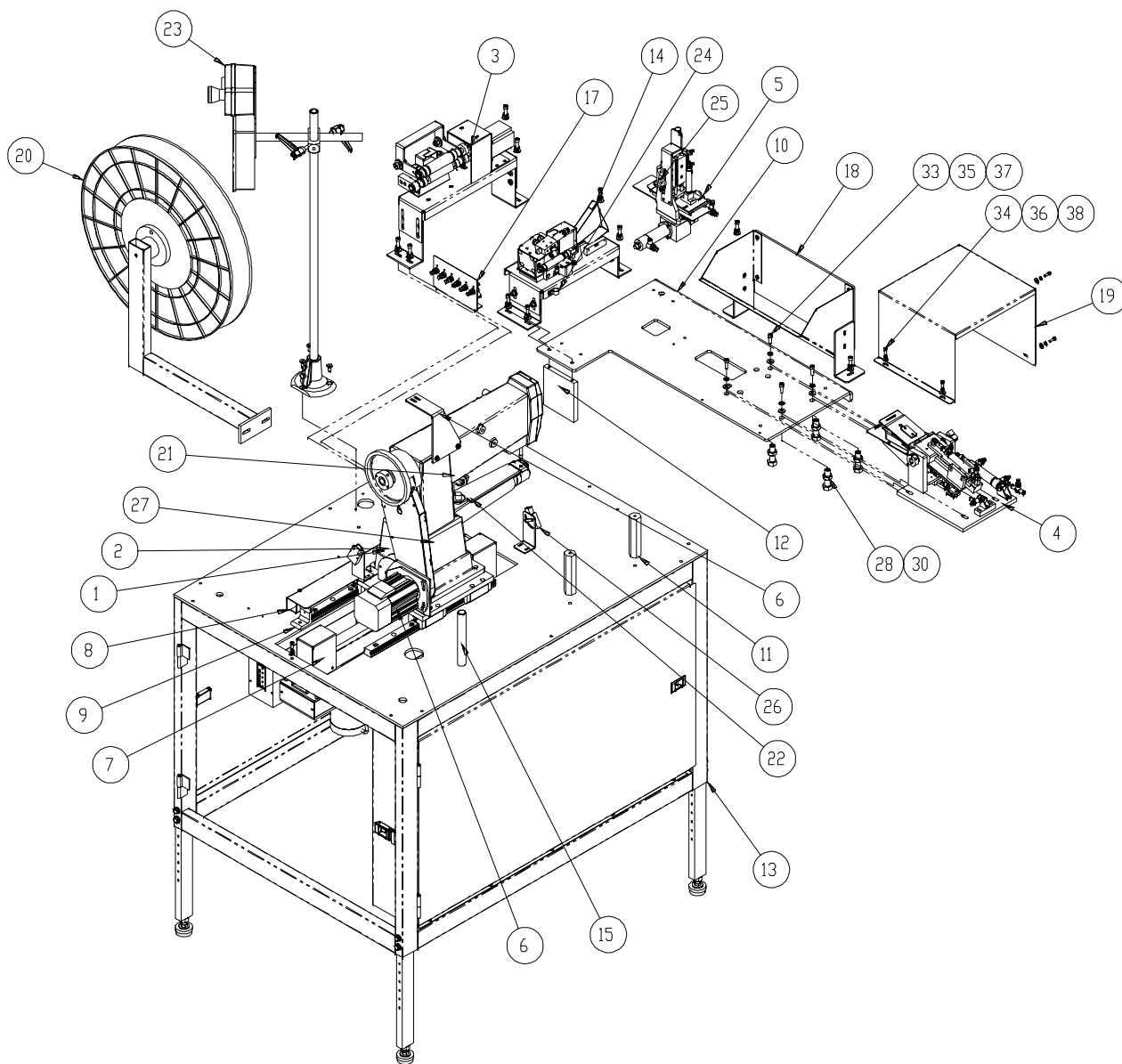
The materials contained herein are confidential and proprietary information of Atlanta Attachment Company. In addition to any confidentiality and non-disclosure obligations that currently exist between you and Atlanta Attachment Company, your use of these materials serves as an acknowledgment of the confidential and proprietary nature of these materials and your duty not to make any unauthorized use or disclosure of these materials.



One-Stop Shopping
For Expendable Replacement Parts for AAC & Other Bedding Equipment Suppliers
Toll Free: **1-866-885-5100**
www.atlantapartsdepot.com • sales@atlantapartsdepot.com

From the library of: Diamond Needle Corp





From the library of: Diamond Needle Corp

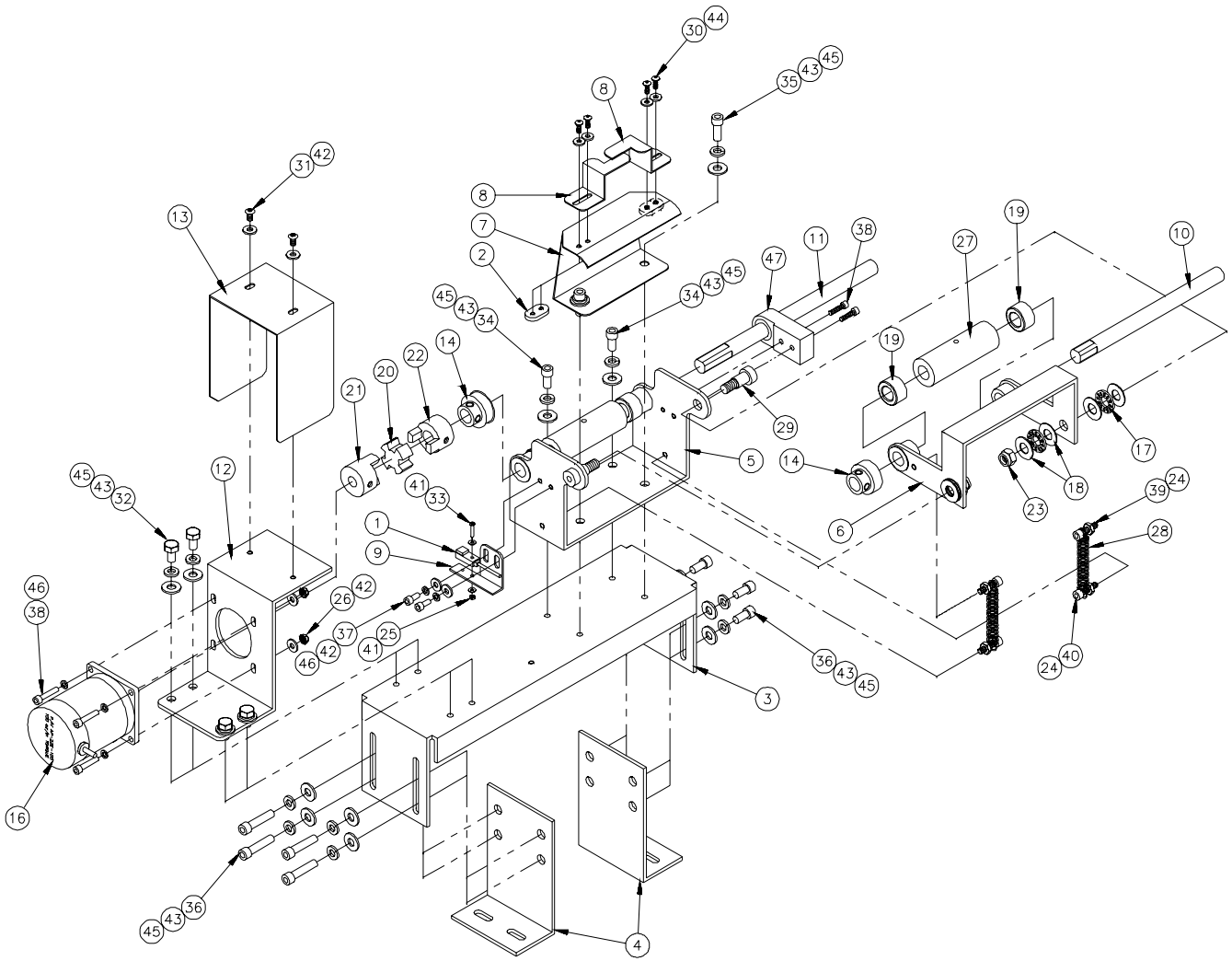


1959-K3 Main Assembly

#	Part #	Description	Qty	Pg	#	Part #	Description	Qty	Pg
1	1278-7055D	PROX SWITCH W/PLUG,12	4		21	1975-412A	PLATE,NUT,4-40@.96 CTC	2	
2	1335M-2034	PLATE, NUT #2-56	3		22	3307092	BRACKET, EYE MOUNT, LH	2	
3	1959-400	FEED ASSY	1	15	23	97-1700	TOUCH SCREEN ASSY	1	26
4	1959201	FOLDER ASSY	1	17	24	AAF1/2	CLAMP, BLACK PLASTIC	1	
5	1959225	INDEX ASSEMBLY	1	19	25	AAF1/8	1/8" PLASTIC CLAMP	2	
6	1959237	SEW HEAD CARRIAGE	1	20	26	FFSM312LVQ	BANNER MINI-BEAM	2	
7	1959244	CARRIAGE DRIVE ASSY	1	21	27	MM9540K53	BUMPER, 3/4 DIA	2	
8	1959249	SWITCH MTG BRKT	1		28	NNJ1/2-20	1/2-20 HEX JAM NUT	4	
9	1959259	CARRIAGE E-STOP BRKT.	2		29	SSFC01040	1/4-20 X 5/8 FLAT ALLEN	3	
10	1959262	BASE PLATE-FOLDER	1		30	SSHC46128	1/2-20 X 2 HEX HEAD	4	
11	1959264	STANDOFF-MAIN PLATE	3		31	SSSC01040	1/4-20 X 5/8 SOC CAP	6	
12	1959270	SUPPORT PLATE, KNIFE	1		32	SSSC01064	1/4-20 X 1 SOC CAP	6	
13	1959280	STAND ASSY-1959-K3	1	22	33	SSSC05048	1/4-28 X 3/4 SOC CAP	4	
14	1959285	KNIFE ASSY	1	23	34	SSSC98032	#10-32 X 1/2 SOC CAP	7	
15	1959292	LEG, SUPPORT, SEW HEAD	1		35	WWFS1/4	WASHER FLAT, 1/4	16	
16	1959293	COVER	1		36	WWFS10	WASHER, FLAT #10	7	
17	1959296	FLOW CONTROL BANK	1		37	WWL1/4	1/4 LW	16	
18	1959300	CHUTE, HANDLE	1		38	WWL10	#10 LW	7	
19	1959310	COVER	1		AAC Drawing Number 1959200 Rev. 0				
20	1959318	ROLL FEEDER	1						

From the library of: Diamond Needle Corp





From the library of: Diamond Needle Corp



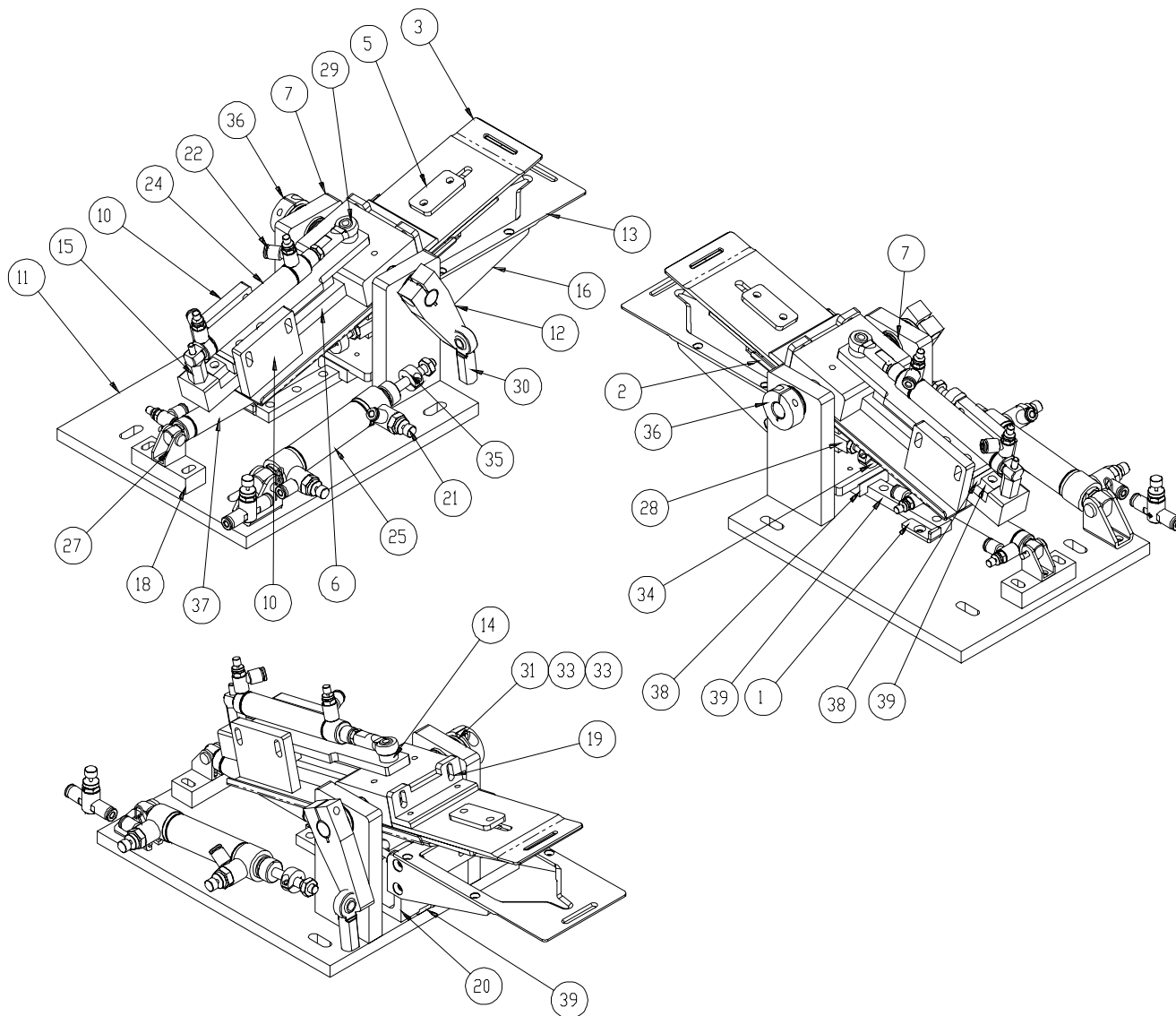
1959-400 Feed Assembly

#	Part #	Description	Qty	Pg	#	Part #	Description	Qty	Pg
1	1278-7055D	PROX SWITCH	1		25	NNH2-56	HEX NUT	1	
2	12787-1637	NUT PLATE	2		26	NNK8-32	KEP NUT	4	
3	1959-401	BASE,PULLER	1		27	PR32	RUBBER ROLLER	2	
4	1959-402	BASE MOUNT	2		28	RRE38C	SPRING	2	
5	1959-403	MOUNT BRKT	1		29	SSAS024032	SCREW, ALLEN SHOULDER	2	
6	1959-404	PIVOT ARM	1		30	SSBC80024	SCREW, BUTTON CAP	4	
7	1959-405	GUIDE SUPPORT	1		31	SSBC90024	SCREW, BUTTON CAP	2	
8	1959-406	GUIDE	2		32	SSHC01032	SCREW, HEX CAP	4	
9	1959-407	SWITCH BRKT	1		33	SSPS50020	SCREW, PAN HEAD	1	
10	1959-408	SHAFT, 6.62L	1		34	SSSC01032	SCREW, SOCKET CAP	2	
11	1959-409	SHAFT, 8.00L	1		35	SSSC01040	SCREW, SOCKET CAP	2	
12	1959-410	MOTOR BRKT	1		36	SSSC01048	SCREW, SOCKET CAP	8	
13	1959-411	COVER	1		37	SSSC90024	SCREW, SOCKET CAP	2	
14	97-2432	PULLER GEAR	2		38	SSSC90048	SCREW, SOCKET CAP	6	
15	AAF1/8	PLASTIC CLAMP	1		39	SSSC98040	SCREW, SOCKET CAP	2	
16	AP-22E-103	STEPPER MOTOR	1		40	SSSC98048	SCREW, SOCKET CAP	2	
17	BBNTA613	THRUST BEARING	4		41	WWF2	FLAT WASHER	2	
18	BBTRA613	THRUST WASHER	8		42	WWF8	FLAT WASHER	8	
19	CC2X568	SET COLLAR	4		43	WWFS1/4	FLAT WASHER	16	
20	MML050	SPIDER	1		44	WWFS6	FLAT WASHER	4	
21	MML050-250	COUPLING, 1/4	1		45	WWL1/4	LOCK WASHER	16	
22	MML050-500	COUPLING, 1/2	1		46	WWL8	LOCK WASHER	6	
23	NNE5/16-18	ELASTIC LOCK NUT	2		47	1959-416	CLUTCH BLOCK	1	
24	NNH10-32	HEX NUT	4						

AAC Drawing Number 192572C Rev. 2

From the library of: Diamond Needle Corp





From the library of: Diamond Needle Corp

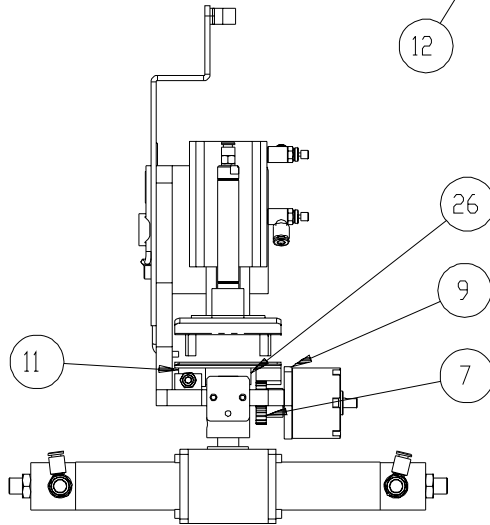
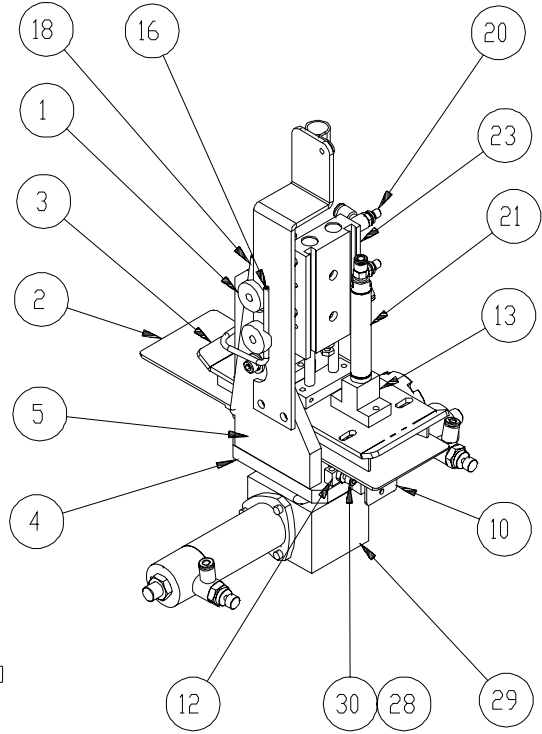
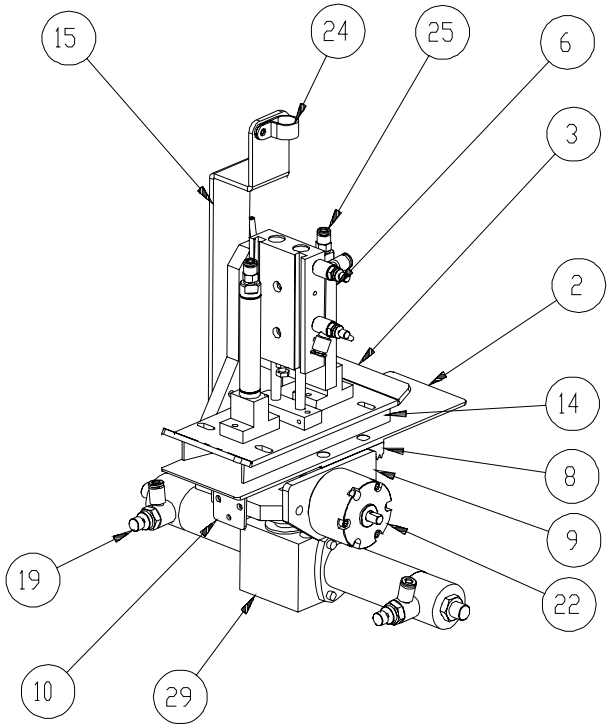


1959201 Folder Assembly

#	Part #	Description	Qty	Pg	#	Part #	Description	Qty	Pg
1	1335338	BRG STOP	2		23	AA2001F-03	FLOW CONTROL,INLINE	1	
2	1959204	CENTER BLADE	1		24	AAC022DXP	CYL, AIR, DA, 9/16B, 2S	1	
3	1959205	STITCH CLAMP	1		25	AAC7DP-1	CYL.,AIR,DA 3/4 BORE	1	
4	1959206	FOLD PLATE	1		26	AAFBP-11C	BRKT,PIVOT,1/4 BORE	1	
5	1959207	FOLD PLATE NUT PLATE	1		27	AAFBP-8C	BRKT,PIVOT,5/32 BORE	1	
6	1959208	PIVOT BLK, STITCH CLAMP	1		28	AAFCT-8	CLEVIS,AIR CYL, 10-32	1	
7	1959209	BLOCK, BEARING	2		29	BBAW-3Z	BRG,ROD END,F, 10-32	1	
8	1959210	SHAFT	1		30	BBAW-4	BEARING,ROD END,FEM	1	
9	1959211	FOLD BLADE CYL MNT	1		31	BBNTA815	BEARING,THRUST,1/2B	2	
10	1959212	BLOCK, BEARING MNTG	2		32	BBPSB-500	BEARING,1/2 ID.,60 L	2	
11	1959213	PLATE, FOLDER ASSM	1		33	BBTRA815	WASHER,THRUST,STL 1/2	4	
12	1959214	LEVER	1		34	CCCL3F	CLAMP COLLAR- 3/16	1	
13	1959215	PLATE,	1		35	CCCL4F	COLLAR,1/4,CLAMP	1	
14	1959216	SPACER	1		36	CCCL8F	CLAMP COLLAR- 1/2	1	
15	1959217	STANDOFF, CYLINDER	1		37	EXTENDED	CYL, AIR, DA, 9/16B, 2S	1	
16	1959218	BRACE, CORNER	2		38	MMGN12HZ0H	MGN12H BEARING BLOCK	2	
17	1959219	BLOCK, MTG	1		39	MMGNR12R0115H115MM RAIL - MGN12H BLK2			
18	1959221	BLOCK, MTG CYLINDER	1		40	NNH10-32	#10-32 HEX NUT	2	
19	1959226	CLAMP MTG ANG	1		41	NNJ1/4-28	1/4-28 HEX JAM NUT	1	
20	1959284	BRACKET	1		42	UAAA225-02	BEARING,BRONZE.,188ID	1	
21	AA198RA508	FLOW CONTROL,5/32	2			Rev. 0			
22	AA198RA510	FLOW CONTROL,5/32	4						

From the library of: Diamond Needle Corp





From the library of: Diamond Needle Corp



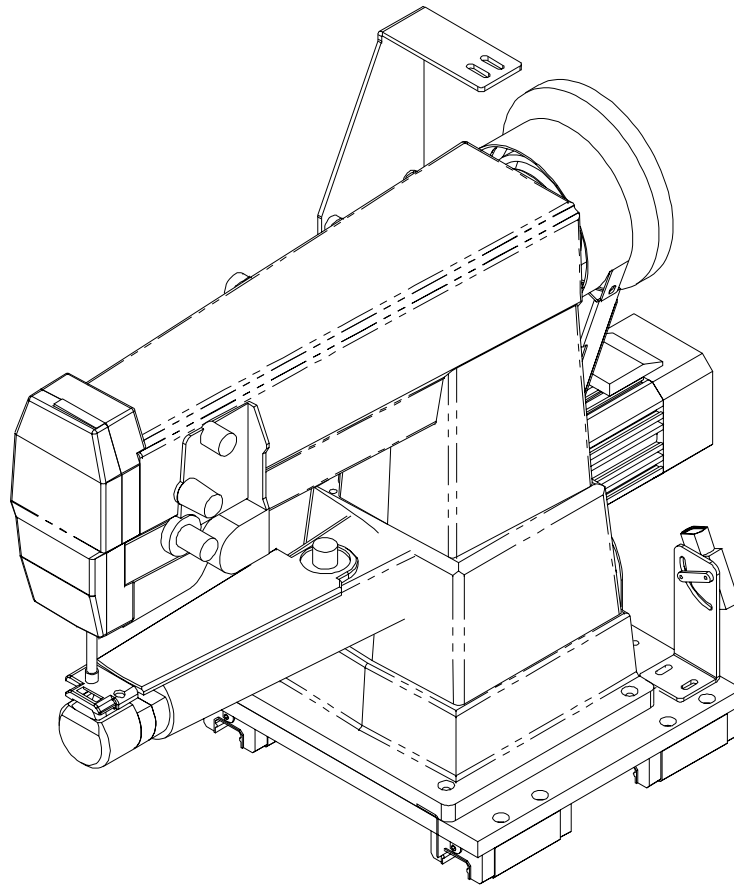
1959225 Index Assembly

#	Part #	Description	Qty	Pg	#	Part #	Description	Qty	Pg
1	1278-7154A	CLAMP, 1/8 TUBE	2		18	1959325	TUBE, UNCURLING AIR	1	
2	1959223	PLATE, CLOTH	1		19	AA198RA508	FLOW CONTROL,5/32	2	
3	1959224	HANDLE CLAMP PLATE	1		20	AA198RA510	FLOW CONTROL,5/32	2	
4	1959227	BASE-INDEXER ASSEMBLY	1		21	AAC8S-1	CYLINDER,AIR,SA	2	
5	1959228	HANDLE CLAMP CYL	1		22	AACR1B-270	ACUTATOR,ROTARY (AIR)	1	
6	1959229	HANDLE GUIDE MTG PLT	1		23	AACXSM1020	CYLINDER,AIR,DUAL ROD	1	
7	1959231	GEAR	1		24	AAF1/2	CLAMP, BLACK PLASTIC	1	
8	1959232	GEAR,RACK	1		25	AAQMC-5-10	QUICK MALE CONNECT	2	
9	1959235	ROTARY CYL MTG PLT	1		26	MMGN12HZ0H	MGN12H BEARING BLOCK	1	
10	1959263	BEARING STOP PL.	2		27	MMGNR12R0095H	CENTER BLADE INDEX	1	
11	1959267	BLADE STOP ADJ BLOCK	1		28	NNH8-32	#8-32 HEX NUT	2	
12	1959268	BLADE STOP ADJ BLOCK	2		29	PT-037180-A1C1M	CYLINDER,ROTARY	1	
13	1959275	BLOCK, MOUNTING	2		30	SSSC90040	#8-32 X 5/8 SOC CAP	2	
14	1959276	HANDLE GUIDE	2		31	SSSC98064	#10-32 X 1 SOC CAP	1	
15	1959287	BRACKET, STRAIN RELIEF	1		32	WWFS10	WASHER, FLAT #10	1	
16	1959312	TUBE, UNCURLING AIR	1		33	WWL10	#10 LW	1	
17	1959324	BUMPER, CENTER BLADE	2						

Rev. 0

From the library of: Diamond Needle Corp



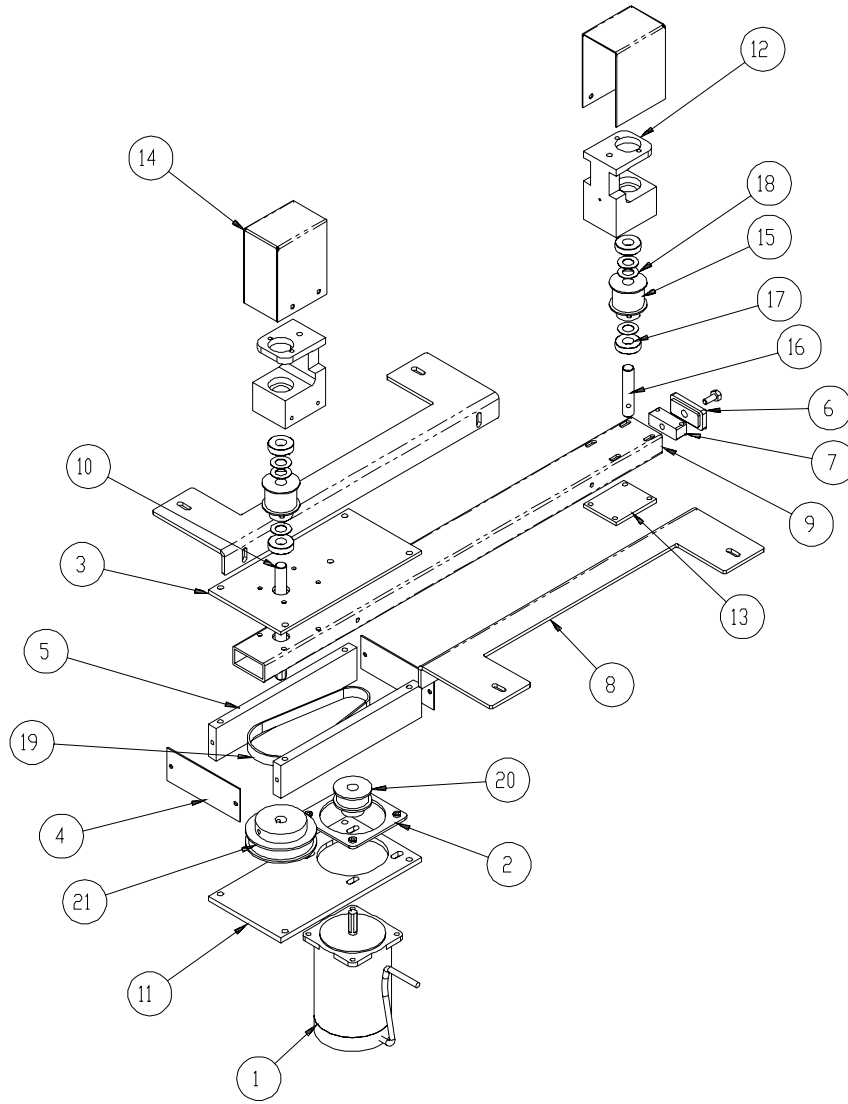


1959237 Sew Head Assembly

#	Part #	Description	Qty	Pg	#	Part #	Description	Qty	Pg
1	1278-6364	DISC, TAPE MOUNTING	1		11	4059-DC1500A	MOTOR & CONTROLLER	1	
2	1959236	CARRIAGE BASE PLATE	1		12	DC1500A-PULLEY	PULLEY,V-BELT 58MM OD	1	
3	1959238	MOTOR MNT-EFKA	1		13	FFSM312LVQ	BANNER MINI-BEAM	1	
4	1959260	SENSOR FLAG, CARRIAGE	1		14	MMAGH25CA	LINEAR BEARING	4	
5	1959261	BELT CLAMP	1		15	MMCPL100	BELT CLAMP	1	
6	1959290	BELT GUARD ASSEMBLY	1		16	SJUKI-DSC-244-4	SMALL ARM	1	
7	1959291	MOTOR MTG. PLATE	1		17	SSHC11_64-40	M4 X 25 HEX HEAD	2	
8	1959323	BRACKET, THREAD BREAK	1		18	WWF8	WASHER, FLAT #8	2	
9	1975-412A	PLATE,NUT,4-40@.96 CTC	1		19	WWL8	#8 LW	2	
10	3307092	BRACKET, EYE MOUNT, LH	1						
						Rev. 0			

From the library of: Diamond Needle Corp





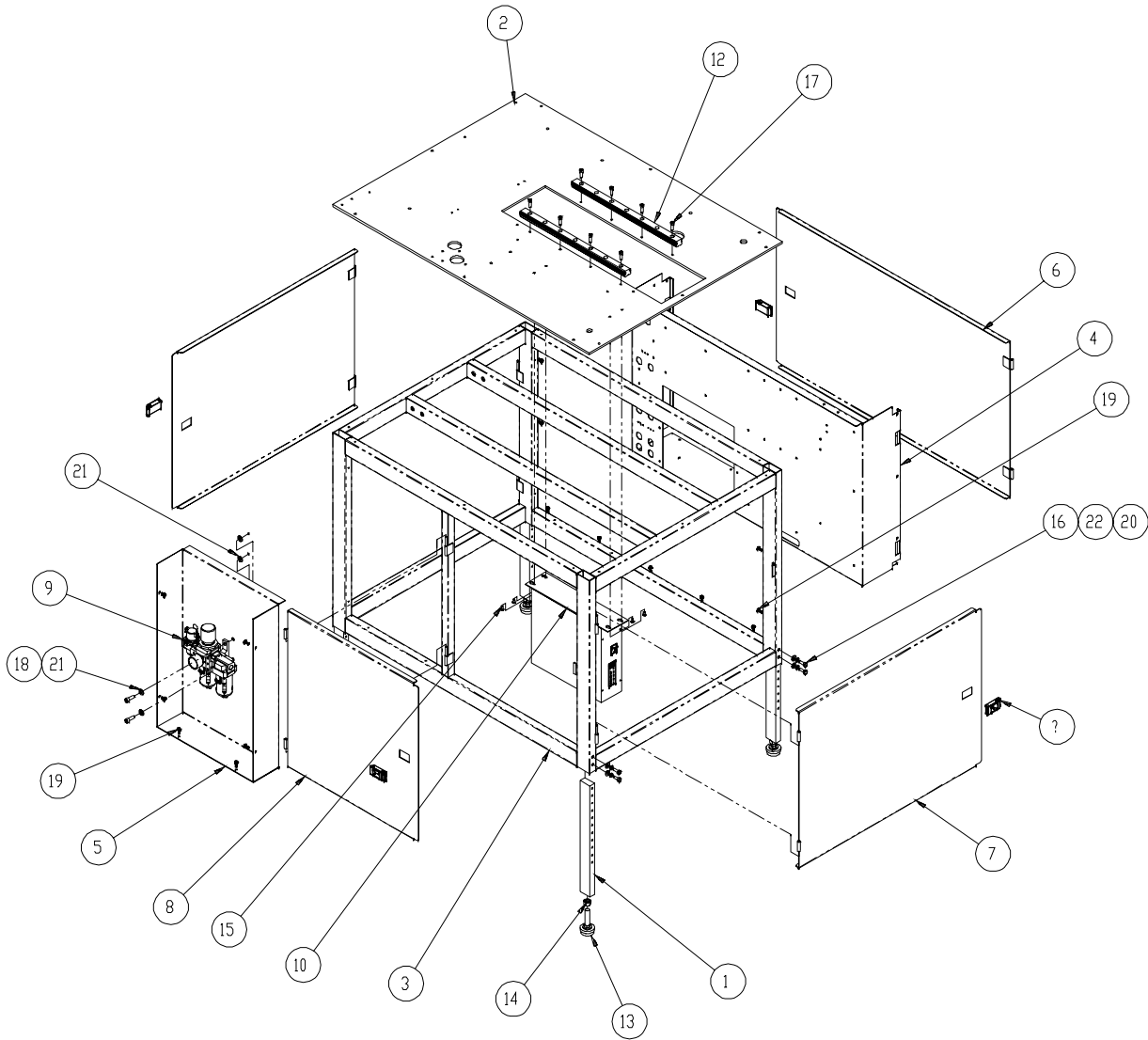
From the library of: Diamond Needle Corp

1959244 Carriage Drive Assembly

#	Part #	Description	Qty	Pg	#	Part #	Description	Qty	Pg
1	011-020	MOTOR, STEPPER W/PLUG	1		13	32007610	PLATE,BACKING	1	
2	0411-016	PLATE,NUT,MOTOR MOUNT	1		14	32007658	BELT COVER, AXIS	2	
3	1322032	MOTOR MTG PLATE, AXIS	1		15	98203012	PULLEY,12 T	2	
4	1322033	BELT COVER	2		16	98203013	SHAFT,IDLER PULLEY	1	
5	1322034	MOTOR MNT STANDOFF	2		17	BB1L005	BEARING,BALL, .500D	4	
6	1322035	PLATE - BELT TENSION	1		18	BBTRA815	WASHER, THRUST,STEEL 1/26		
7	1322036	ADJ BLOCK - BELT TENS	1		19	GG157L050	BELT,GEAR,3/8P,1/2W	1	
8	1959248	CARRIAGE DRIVE MTG	2		20	PP12LF050M2	PULLEY, 3/8P, 12T,2 SETSCR1		
9	1959257	RAIL MOUNT TUBE	1		21	PP24LB050M1	PULLEY 3/8P, 24T, 1/2BORE	1	
10	1959274	SHAFT, DRIVE	1		22	SSHC01040	1/4-20 X 5/8 HEX HEAD	1	
11	1959298	PLATE, MOTOR MOUNT	1						
12	32007605	BRKT,PULLEY	2						

Rev. 0





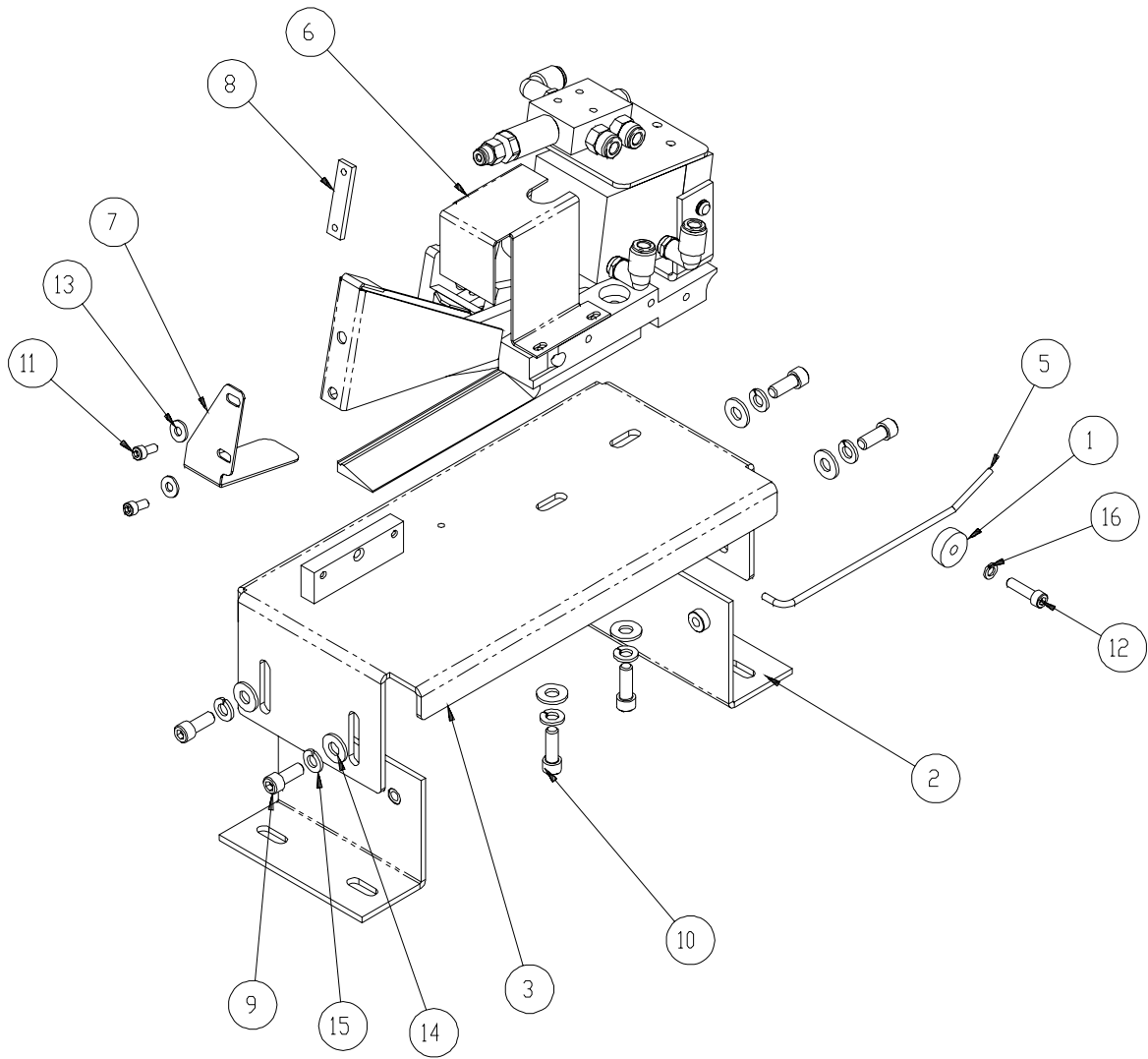
From the library of: Diamond Needle Corp

1959280 Stand Assembly

#	Part #	Description	Qty	Pg	#	Part #	Description	Qty	Pg
1	132556-273	LEG, 3/4 X 1-1/2 X 15 LG	4		13	MMFB4444	FOOT, RUBBER	4	
2	1959242	TABLE TOP	1		14	NNH1/2-13	1/2-13 HEX NUT	4	
3	1959250	FRAME WELDMENT	1		15	SSBC98024	#10-32 X 3/8 BUT HEAD	4	
4	1959277	CONTROL BOX ASSY	1		16	SSHC01048	1/4-20 X 3/4 HEX HEAD	8	
5	1959279	PNEUMATIC PANEL	1		17	SSSC01048	1/4-20 X 3/4 SOC CAP	8	
6	1959281	DOOR-FRONT	1		18	SSSC10056	5/16-18 X 7/8 SOC CAP	2	
7	1959282	DOOR-SIDE	2		19	SSZS93032	SCREW, SHT.METAL 10 ZIP 17		
8	1959283	DOOR-SIDE-SMALL	1		20	WWFS1/4	WASHER FLAT, 1/4	8	
9	AA198-5110	FILTER/REGULATOR	1		21	WWFS5/16	WASHER, FLAT, 5/16	4	
10	EFKA BOX-REF	EFKA CONTROLLER BOX	1		22	WWL1/4	1/4 LW	8	
11	MM40450010	FASTENER,SLIDE LOCK	4						
12	MMAGR25414M	RAIL,MODIFIED	2						

Rev. 0





From the library of: Diamond Needle Corp

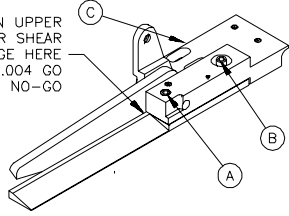
1959285 Knife Assembly

#	Part #	Description	Qty	Pg	#	Part #	Description	Qty	Pg
1	1278-7154A	CLAMP, 1/8 TUBE	1		10	SSSC01048	1/4-20 X 3/4 SOC CAP	2	
2	1959271	MTG. BRKT, KNIFE	2		11	SSSC90024	#8-32 X 3/8 SOC CAP	2	
3	1959273	BASE , MAIN, KNIFE	1		12	SSSC98048	#10-32 X 3/4 SOC CAP	1	
4	1959326	MOUNTING BLOCK	1		13	WWF8	WASHER, FLAT #8	2	
5	40-609B	TUBE, UNCURLING AIR	1		14	WWFS1/4	WASHER FLAT, 1/4	6	
6	AT401-07HD	CUTTER, SUB ASSY	1	25	15	WWL1/4	1/4 LW	6	
7	AT401-08	MATERIAL LIFT	1		16	WWL10	#10 LW	1	
8	AT401-09	NUT PLATE, 8-32	1						
9	SSSC01040	1/4-20 X 5/8 SOC CAP	4						

Rev. 0

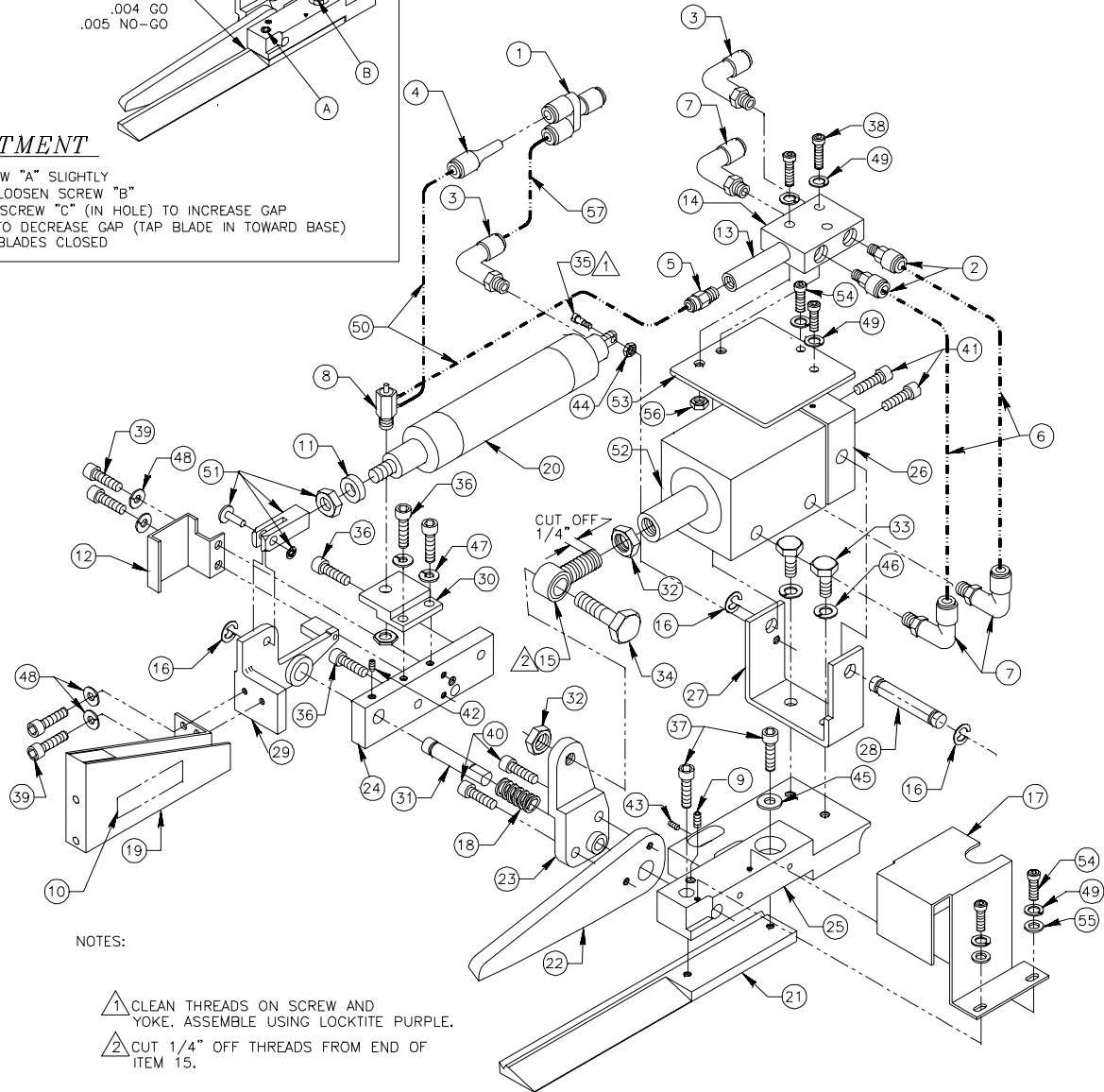


ADJUST GAP BETWEEN UPPER AND LOWER BLADE FOR PROPER SHEAR
CHECK WITH FEELER GAUGE HERE
.004 GO
.005 NO-GO



ADJUSTMENT

LOOSEN SCREW "A" SLIGHTLY
COMPLETELY LOOSEN SCREW "B"
TIGHTEN SET SCREW "C" (IN HOLE) TO INCREASE GAP
LOOSEN "C" TO DECREASE GAP (TAP BLADE IN TOWARD BASE)
CHECK WITH BLADES CLOSED



NOTES:

- 1 CLEAN THREADS ON SCREW AND YOKE. ASSEMBLE USING LOCKTITE PURPLE.
- 2 CUT 1/4" OFF THREADS FROM END OF ITEM 15.

From the library of: Diamond Needle Corp

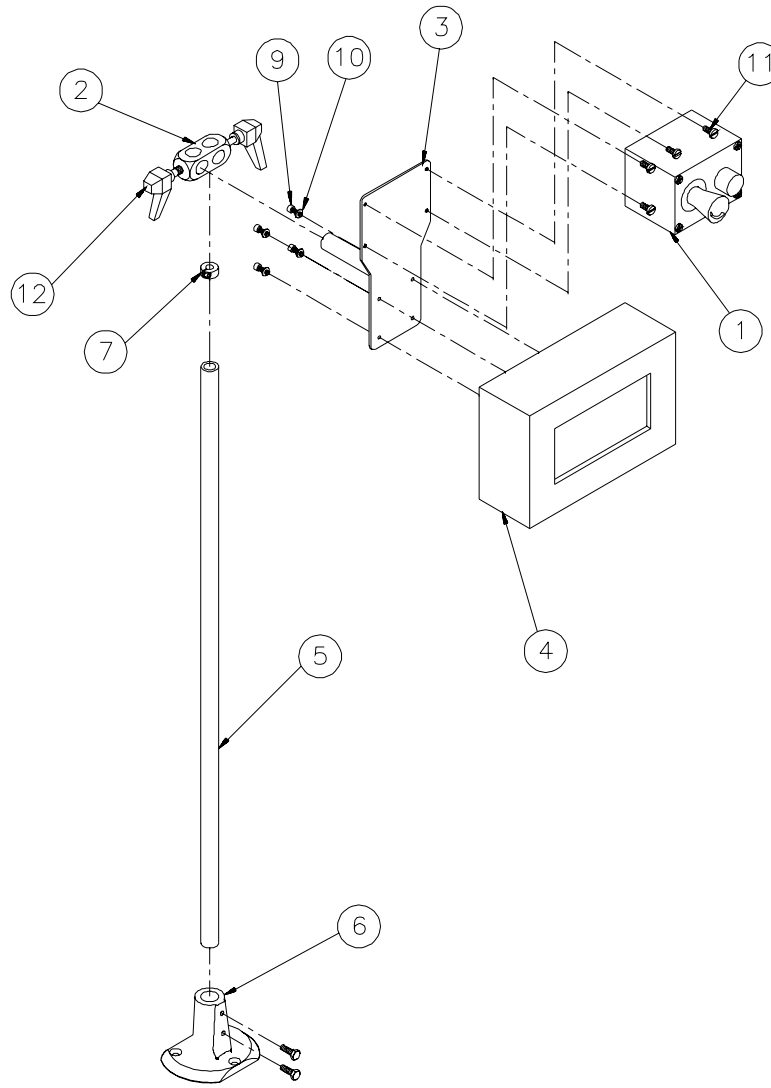
AT401-07HD Cutter Sub-Assembly

#	Part #	Description	Qty	Pg	#	Part #	Description	Qty	Pg
1	AAQUY-5-5	AIR FITTING	1		30	AT301-49	VALVE BRKT	1	
2	AAQMC-4-8	AIR FITTING	2		31	AT301-24	CUTTER SHAFT	1	
3	AAQME-5-10	AIR FITTING	2		32	NNJ5/16-24	JAM NUT	2	
4	AAQPR-8-5	AIR FITTING	1		33	SSHC01032	SCREW, HEX CAP	2	
5	AAQMC-8-8	AIR FITTING	1		34	SSHC20056	SCREW, HEX CAP	1	
6	AATP1/8BL	AIRLINE	6"		35	SSM200246	SCREW, SHOULDER	1	
7	AAQME-4-8	AIR FITTING	3		36	SSSC98032	SCREW, SOCKET CAP	4	
8	AAVSMVA-3	VALVE	1		37	SSSC98048	SCREW, SOCKET CAP	2	
9	SSSS01016	SCREW, SOCKET SET	1		38	SSSC80064	SCREW, SOCKET CAP	2	
10	AT-LABEL-1	CAUTION LABEL	2		39	SSSC90024	SCREW, SOCKET CAP	4	
11	CCCL3F	CLAMP COLLAR	1		40	SSSC98024	SCREW, SOCKET CAP	2	
12	AT301-48	FINGER GUARD	1		41	SSSC01048	SCREW, SOCKET CAP	2	
13	AAV341A	VALVE	1		42	SSSS98016	SCREW, SOCKET SET	1	
14	AAV41-P	VALVE	1		43	SSSS98024	SCREW, SOCKET SET	1	
15	BBAM-5Z	ROD END BEARING	1		44	NNH214-32	HEX NUT	1	
16	MM8407A132	E-RING	3		45	WWFS10	FLAT WASHER	1	
17	AT301-53	FINGER GUARD	1		46	WWL1/4	LOCK WASHER	2	
18	RRLC072HJ6	SPRING	1		47	WWL10	LOCK WASHER	2	
19	AT401-02	GUARD	1		48	WWL8	LOCK WASHER	4	
20	AT301-05	CYLINDER	1		49	WWL6	LOCK WASHER	6	
21	AT401-01A	LOWER CUTTER	1		50	AATP1/16B	BLUE AIRLINE	1'	
22	AT401-03	UPPER CUTTER	1		51	AAFCT-8	CLEVIS	1	
23	AT301-10	DRIVE LEVER	1		52	AACSHH104	AIR CYLINDER	1	
24	AT301-11	SUPPORT BLOCK	1		53	AT301-52	VALVE MNT BRKT	1	
25	AT301-43	MAIN BLOCK	1		54	SSSC80024	SCREW, SOCKET CAP	4	
26	AT301-13	CYLINDER ADAPTER	1		55	WWFS6	FLAT WASHER	2	
27	AT301-44	YOKE	1		56	NNE6-32	ELASTIC LOCK NUT	2	
28	AT301-15	SHAFT	1		57	AATP5/32	AIRLINE	2"	
29	AT301-50	GUARD BRKT	1						

AAC Drawing Number 192561C Rev. 4

From the library of: Diamond Needle Corp





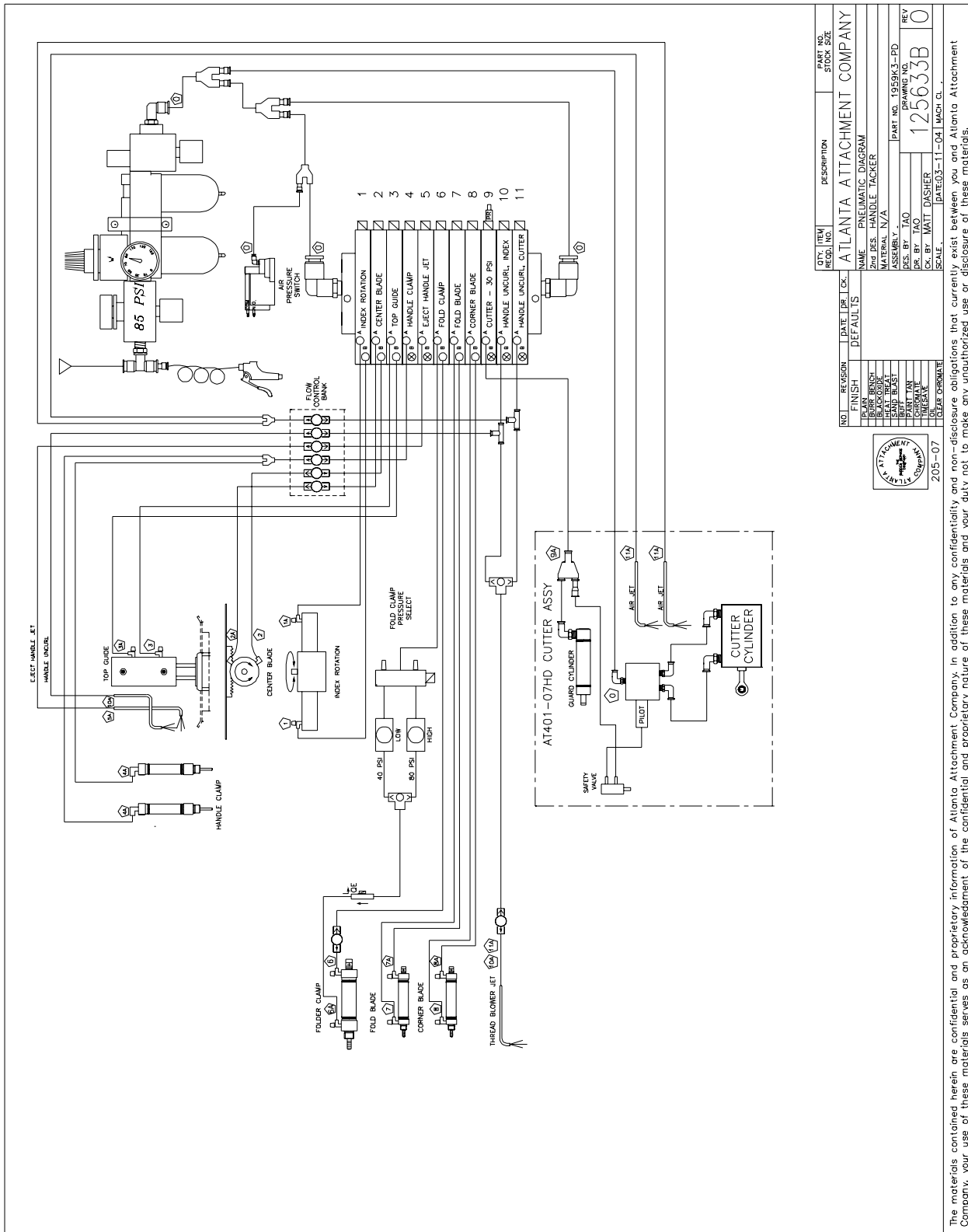
From the library of: Diamond Needle Corp

97-1700 Touch Screen Assembly

#	Part #	Description	Qty	Pg	#	Part #	Description	Qty	Pg
1	1278-6010	START/STOP BUTTON	1		8	EE16-3C2406	CABLE	10'	
2	28201	CROSS BLOCK	1		9	SSSC80032	SCREW, SOCKET CAP	4	
3	40-112A	TOUCH SCREEN MOUNT	1		10	WWL6	LOCK WASHER	4	
4	4080-003	CONTROLLER, SBUS	1		11	SSPS90040	SCREW, PAN HEAD	4	
5	97-1711	TUBE	1		12	TTH32426	THREADED HANDLE	2	
6	AP-1721B	BASE	1		AAC Drawing Number 191886C Rev. 2				
7	CCCL12F	CLAMP COLLAR	1						



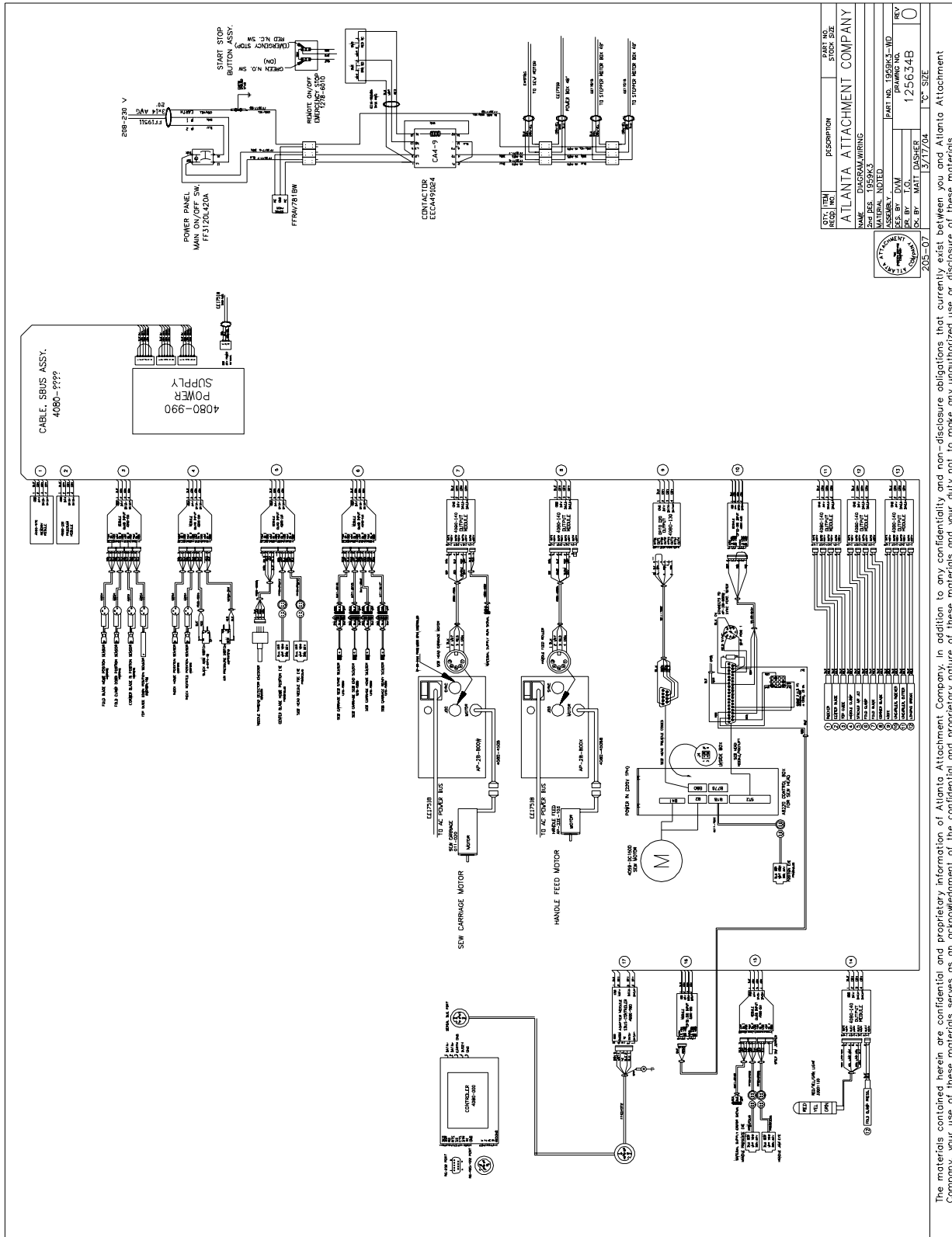
1959K3-PD Pneumatic Diagram



From the library of: Diamond Needle Corp



1959K3-WD Wiring Diagram

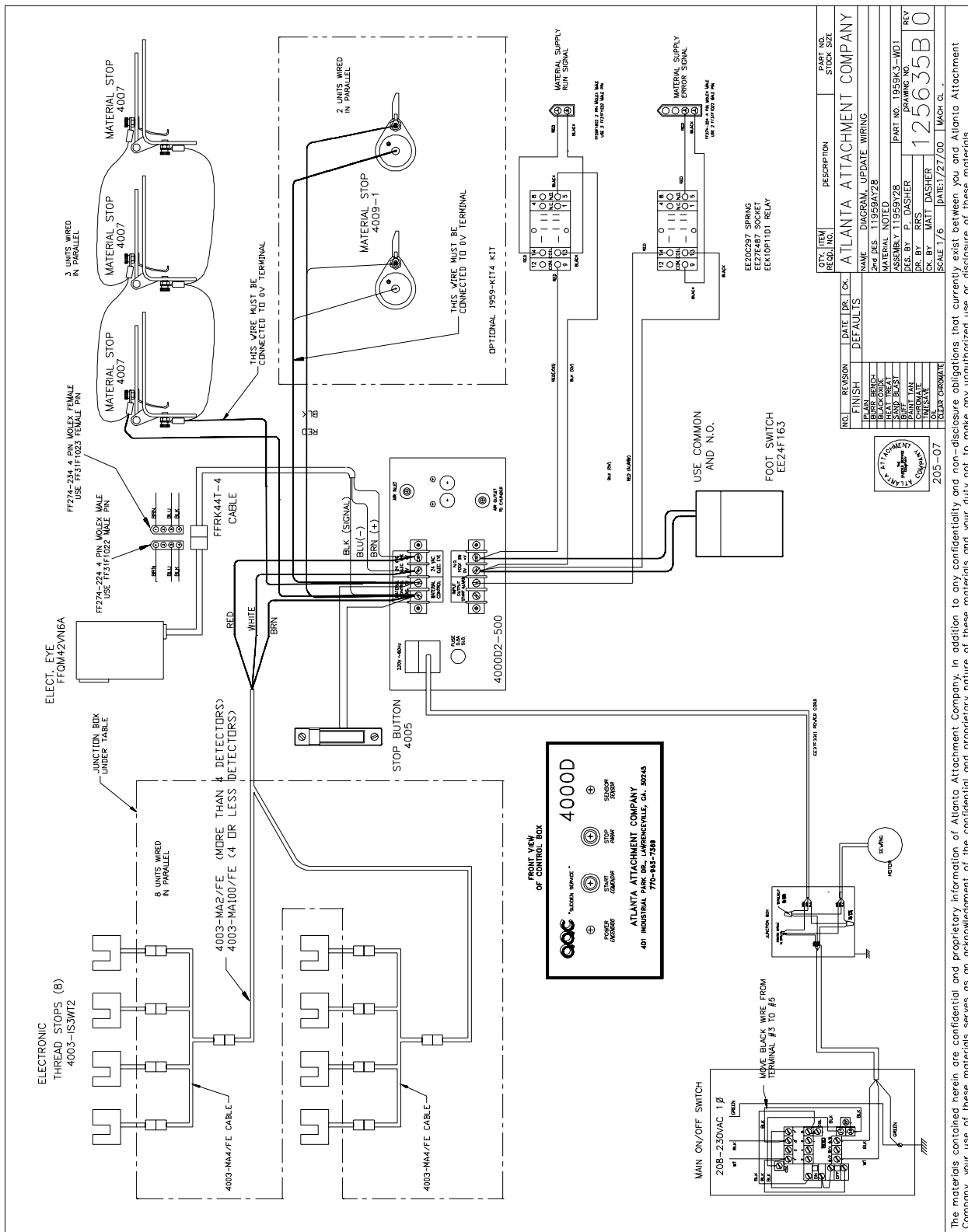


REVISION	DESCRIPTION	DATE	BY
1	ISSUED	3/17/74	125634B
ATLANTA ATTACHMENT COMPANY			
MATERIAL NOTED			
ASSEMBLY			
CHK'D BY	DATE	CHK'D BY	DATE
DR. BY	DATE	DR. BY	DATE
PART NO. 1959K3-WD		REV. 0	
125634B		3/17/74	
205-07		C. SIZE	

The materials contained herein are confidential and proprietary information of Atlanta Attachment Company. In addition to any confidentiality and non-disclosure obligations that currently exist between you and Atlanta Attachment Company, your use of these materials serves as an acknowledgment of the confidential and proprietary nature of these materials and your duty not to make any unauthorized use or disclosure of these materials.



1959K3-WD1 Wiring Diagram



The materials contained herein are confidential and proprietary information of Atlanta Attachment Company. In addition to any confidentiality and non-disclosure obligations that currently exist between you and Atlanta Attachment Company, your use of these materials serves as an acknowledgment of the confidential and proprietary nature of these materials and your duty not to make any unauthorized use or disclosure of these materials.

From the library of: Diamond Needle Corp



Notes

From the library of: Diamond Needle Corp



Atlanta Attachment Company (AAC)

Statement of Warranty

Manufactured Products

Atlanta Attachment Company warrants manufactured products to be free from defects in material and workmanship for a period of eight hundred (800) hours of operation or one hundred (100) days which ever comes first. Atlanta Attachment Company warrants all electrical components of the Serial Bus System to be free from defects in material or workmanship for a period of thirty six (36) months.

Terms and Conditions:

- AAC Limited Warranty becomes effective on the date of shipment.
- AAC Warranty claims may be made by telephone, letter, fax or e-mail. All verbal claims must be confirmed in writing.
- AAC reserves the right to require the return of all claimed defective parts with a completed warranty claim form.
- AAC will, at its option, repair or replace the defective machine and parts upon return to AAC.
- AAC reserves the right to make the final decision on all warranty coverage questions.
- AAC warranty periods as stated are for eight hundred (800) hours or one hundred (100) days which ever comes first.
- AAC guarantees satisfactory operation of the machines on the basis of generally accepted industry standards, contingent upon proper application, installation and maintenance.
- AAC Limited Warranty may not be changed or modified and is not subject to any other warranty expressed or implied by any other agent, dealer, or distributor unless approved in writing by AAC in advance of any claim being filed.

What Is Covered

- Electrical components that are not included within the Serial Bus System that fail due to defects in material or workmanship, which are manufactured by AAC are covered for a period of eight hundred (800) hours.
- Mechanical parts or components that fail due to defects in material or workmanship, which are manufactured by AAC.
- Purchased items (sewing heads, motors, etc.) will be covered by the manufacturer's (OEM) warranty.
- AAC will assist in the procurement and handling of the manufacturer's (OEM) claim.

What Is Not Covered

- Parts that fail due to improper usage, lack of proper maintenance, lubrication and/or modification.
- Damages caused by; improper freight handling, accidents, fire and issues resulting from unauthorized service and/or personnel, improper electrical, plumbing connections.
- Normal wear of machine and parts such as Conveyor belts, "O" rings, gauge parts, cutters, needles, etc.
- Machine adjustments related to sewing applications and/or general machine operation.
- Charges for field service.
- Loss of time, potential revenue, and/or profits.
- Personal injury and/or property damage resulting from the operation of this equipment.

Atlanta Attachment Company (AAC) Declaración de Garantía

Productos Manufacturados

Atlanta Attachment Company garantiza que los productos de fabricación son libre de defectos de material y de mano de obra durante un periodo de ochocientos (800) horas de operación o cien (100) días cual llega primero. Atlanta Attachment Company garantiza que todos los componentes del bus serie son libre de defectos de material y de mano de obra durante un periodo de treinta y seis (36) meses.

Términos y Condiciones:

- La Garantía Limitada de AAC entra en efecto el día de transporte.
- Reclamos de la Garantía de AAC pueden ser realizados por teléfono, carta, fax o correo electrónico. Todo reclamo verbal tiene que ser confirmado via escrito.
- AAC reserva el derecho para exigir el retorno de cada pieza defectuosa con un formulario de reclamo de garantía.
- AAC va, según su criterio, reparar o reemplazar la máquina o pieza defectuosa devuelto para AAC.
- AAC reserva el derecho para tomar la decisión final sobre toda cuestión de garantía.
- Las garantías de AAC tiene un validez de ochocientos (800) horas o cien (100) días cual llega primero.
- AAC garantiza operación satisfactoria de sus máquinas en base de las normas aceptadas de la industria contingente en la instalación y mantenimiento adecuada.
- La garantía de AAC no puede ser cambiado o modificado y no está sujeto a cualquier otra garantía implicado por otro agente o distribuidor menos que sea autorizado por AAC antes de cualquier reclamo.

Lo Que Está Garantizado

- Componentes eléctricos que no está incluidos dentro del sistema Bus Serie que han sido manufacturados por AAC son garantizados por un periodo de ochocientos (800) horas.
- Mechanical parts or components that fail due to defects in material or workmanship, which are manufactured by AAC.
- Componentes comprados (Motores, Cabezales,) son protegidos debajo de la garantía del fabricante.
- AAC asistirá con el manejo de todo reclamo de garantía bajo la garantía del fabricante.

Lo Que No Está Garantizado

- Falla de repuestos al raíz de uso incorrecto, falta de mantenimiento, lubricación o modificación.
- Daños ocurridos al raíz de mal transporte, accidentes, incendio o cualquier daño al resultado de servicio por personas no autorizados o instalaciones incorrectas de conexiones eléctricas o neumáticas.
- Desgaste normal de repuestos como correas, anillos de goma, cuchillos, agujas, etc.
- Ajustes de la máquina en relación a las aplicaciones de costura y/o la operación en general de la máquina.
- Gastos de reparaciones en el campo.
- Pérdida de tiempo, ingresos potenciales, y/o ganancias.
- Daños personales y/o daños al propiedad al resultado de la operación de este equipo.

© 2007 Atlanta Attachment Company. All rights reserved.

© 2007 Atlanta Attachment Company. Derechos reservados.